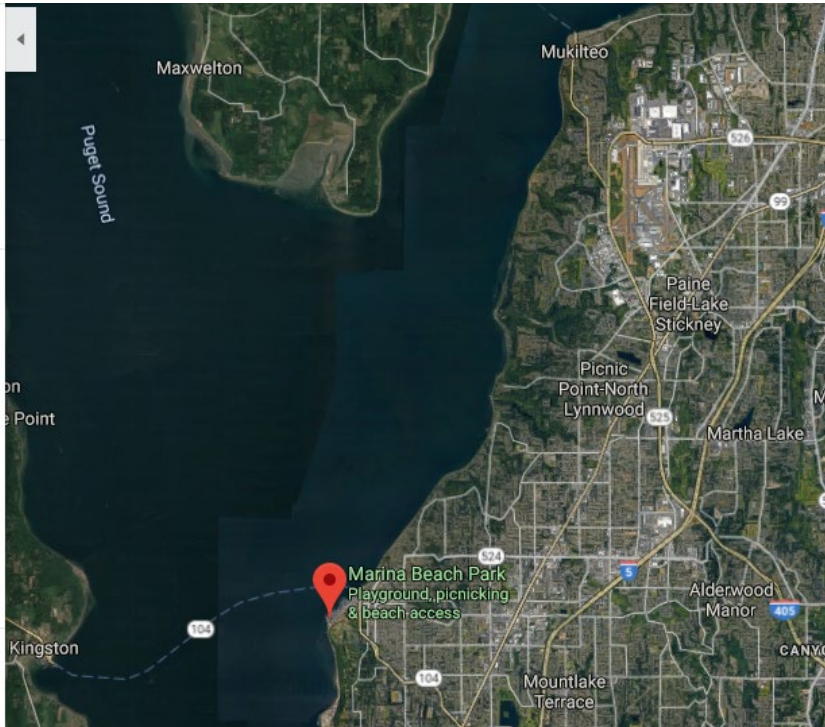


Shore access for kiteboarding seems to be common at popular destinations internationally

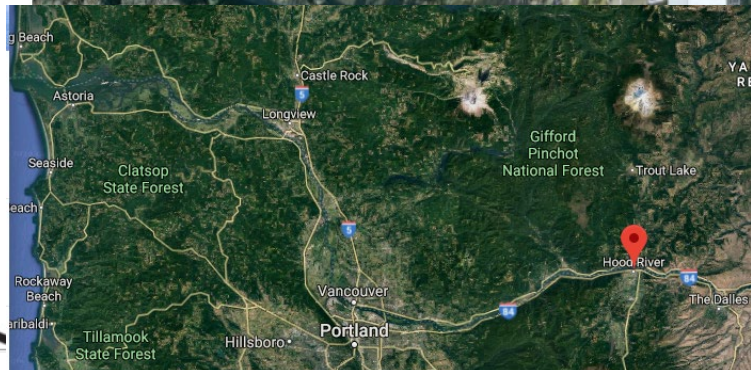
Coastal shore access





HOOD RIVER WATERFRONT

A coordinated water access plan between the Port of Hood River, Hood River Fire & EMS, and the Columbia Gorge Windsurfing and Kiteboarding Associations.



LOST AND FOUND: Please visit the Port of Hood River office at 1000 E. Port Marina Drive.

EMERGENCY VEHICLES: The red-zone parking at the Event Site must be kept clear for emergency vehicles.

SWIMMERS: Swim at your own risk! The confluence of the Hood River and Columbia River create cold, swift currents and steep drop-offs. Life jackets or other flotation devices are recommended, especially for children. No professional rescue service is available; no lifeguards are on duty.

DOG OWNERS: Keep your dog on a leash. Pick up and dispose of waste in proper receptacles.

WINDSURFERS: Sail upwind after launching to clear congestion.

KITEBOARDERS: Launching and landing permissible at the Event Site until high water recedes. Pump and dry allowed year round in designated area.

SPECTATORS: Kite lines can cause serious injury. Please stay 200' back from kiteboard launch area.

BARGES / LOG RAFT TRAFFIC: Barges have a blind spot up to 1/2 mile in front. Check for barge and tug boat traffic before crossing the river as you often cannot hear barges approaching because of wind conditions. Barges create a wind shadow, leaving you unable to maneuver. Vessels confined to the channel have the right of way, and you can be fined for obstructing commercial river traffic.

LOCAL HAZARDS: No rescue service available. Extreme risk of hypothermia. Do not sail or kiteboard to exhaustion. Never sail or kiteboard alone. Beware of strong and unpredictable winds up to 60 mph, strong irregular current up to 6 mph, and changing conditions. Always look before jibing and jumping.

NATIVE AMERICAN FISHING TREATY RIGHTS: Fishers from the Yakima, Warm Springs, Umatilla, and Nez Perce tribes are on the Columbia River exercising their tribal treaty right to fish. Salmon harvested by the tribes is essential to the tribal religion, diet, and economy. Look out for buoys, floats, nets, ropes, and boats. Keep 10-20 feet clear from all buoy lines. Never sail or kiteboard over a net or assume a boat operator can see you. Never cut shoreline ropes that are attached to buoys or nets.

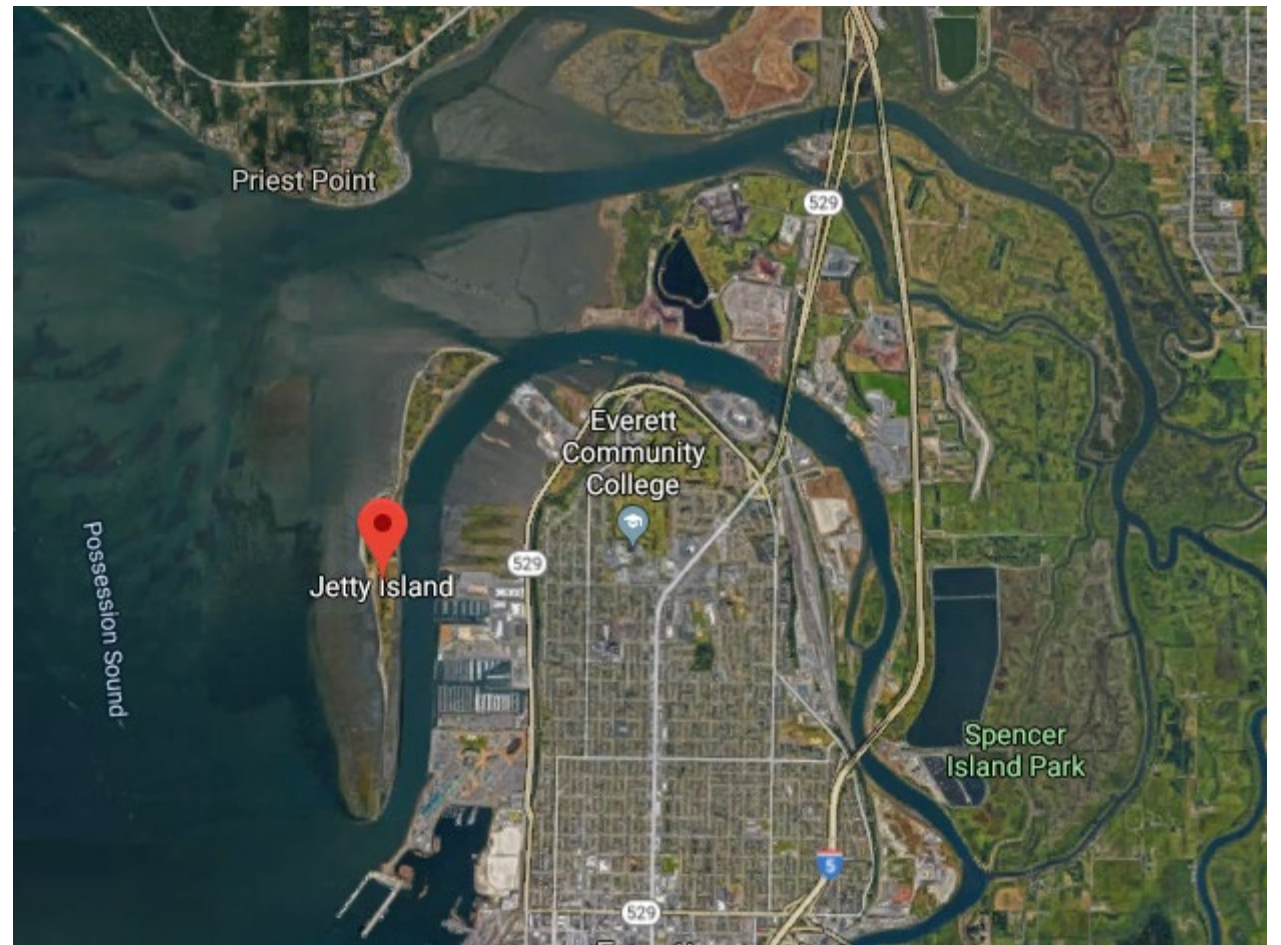
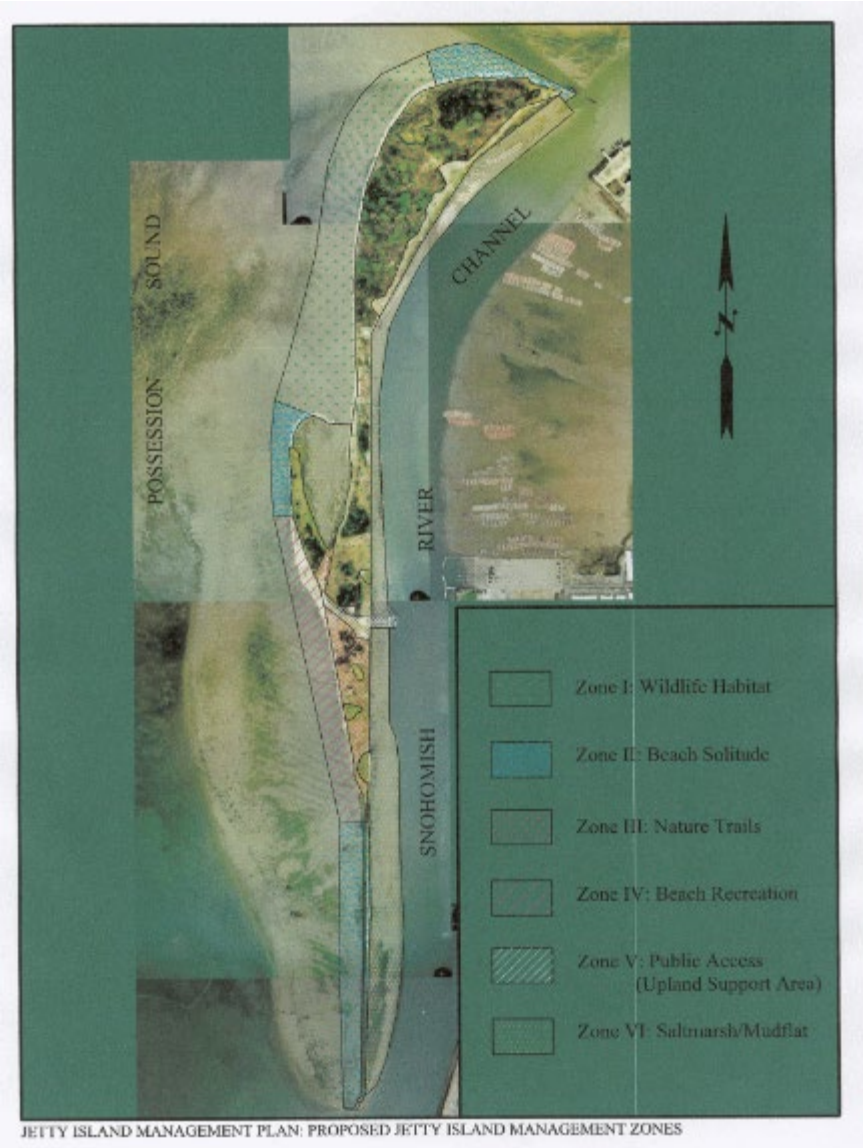
EMERGENCY ACCESS POINTS

In the event of an emergency, call 911 and indicate emergency access point and number.

- 1 HOOK
- 2 WATERFRONT PARK
- 3 EVENT SITE
- 4 NICHOLS BASIN / SLACKWATER BEACH
- 5 SPIT
- 6 MARINA BEACH
- 7 MARINA PARK / MARINA GREEN
- 8 BOAT LAUNCH



Jetty Island, Everett Washington Coastal Off-shore kiteboarding access



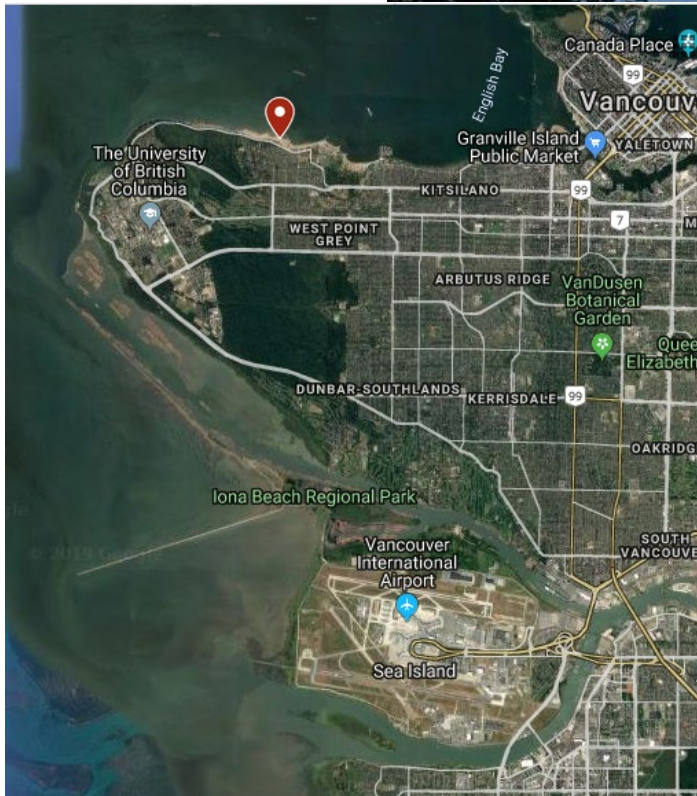
Jetty Island, Everett Washington

- Public access limited to Jetty island days July - Sept to manage habitat impacts
- Daily ferry access by donation (\$2 recommended), and \$3 charge for parking at ferry terminal
- Run by the port of Everett and Everett parks and community services
- Port owned jetty, man made to protect navigation channel
- Ongoing marsh enhancements and stewardship work in the area to accommodate salmon
- Seasonal floating restroom, otherwise not serviced



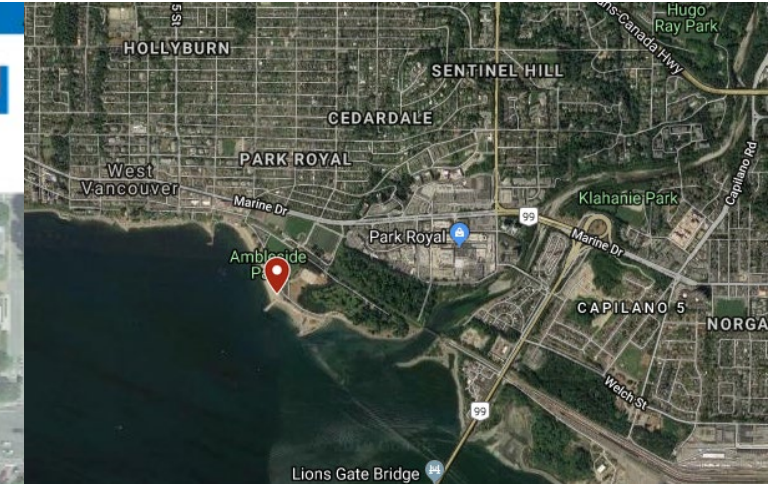
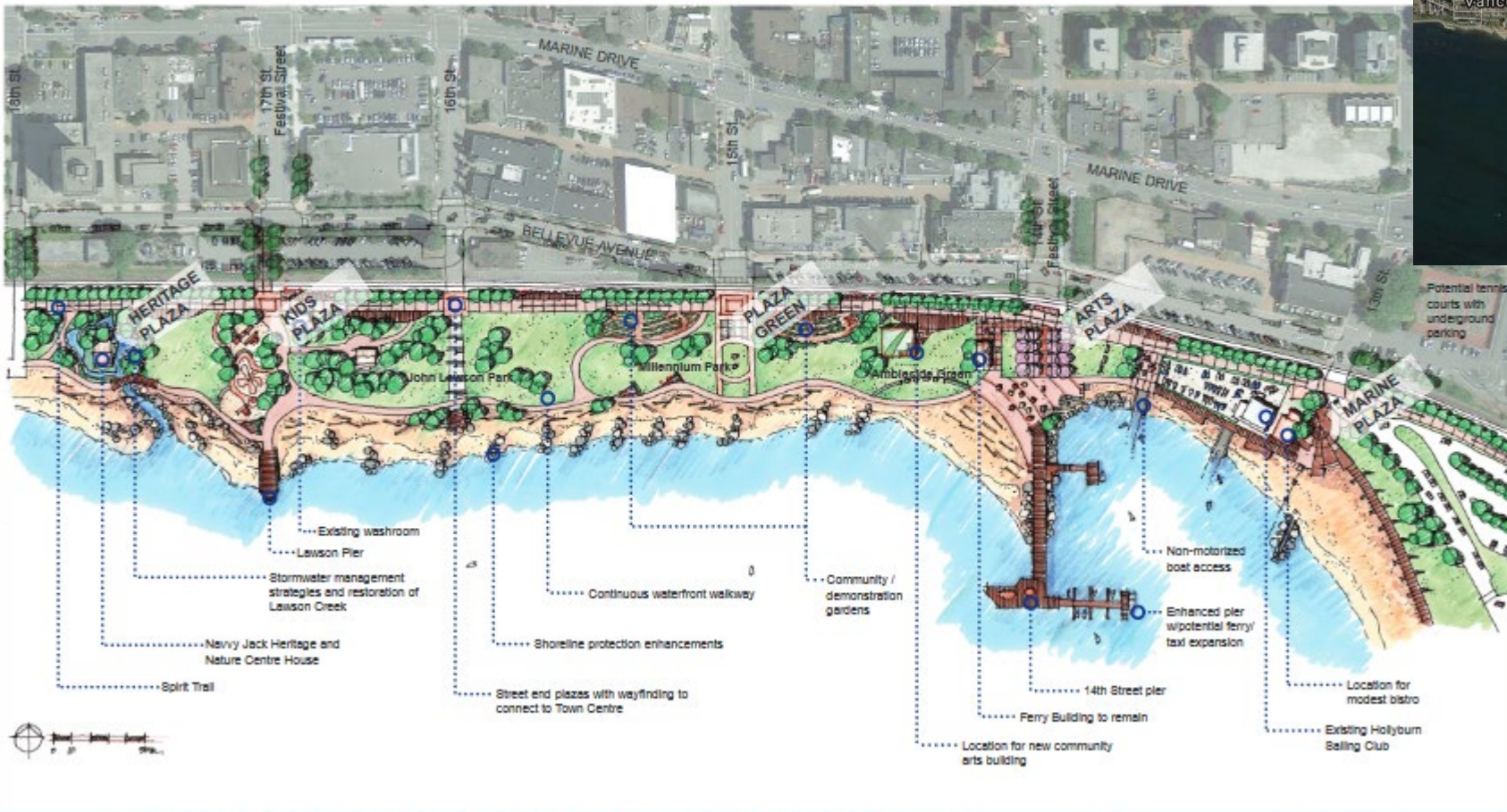
Spanish Bank Extension

Coastal shore kiteboarding access under 2014 pilot program



Coastal shore kiteboarding access, though wind sport is not a proposed use under 2016 concept plan

THE AMBLESIDE WATERFRONT CONCEPT PLAN

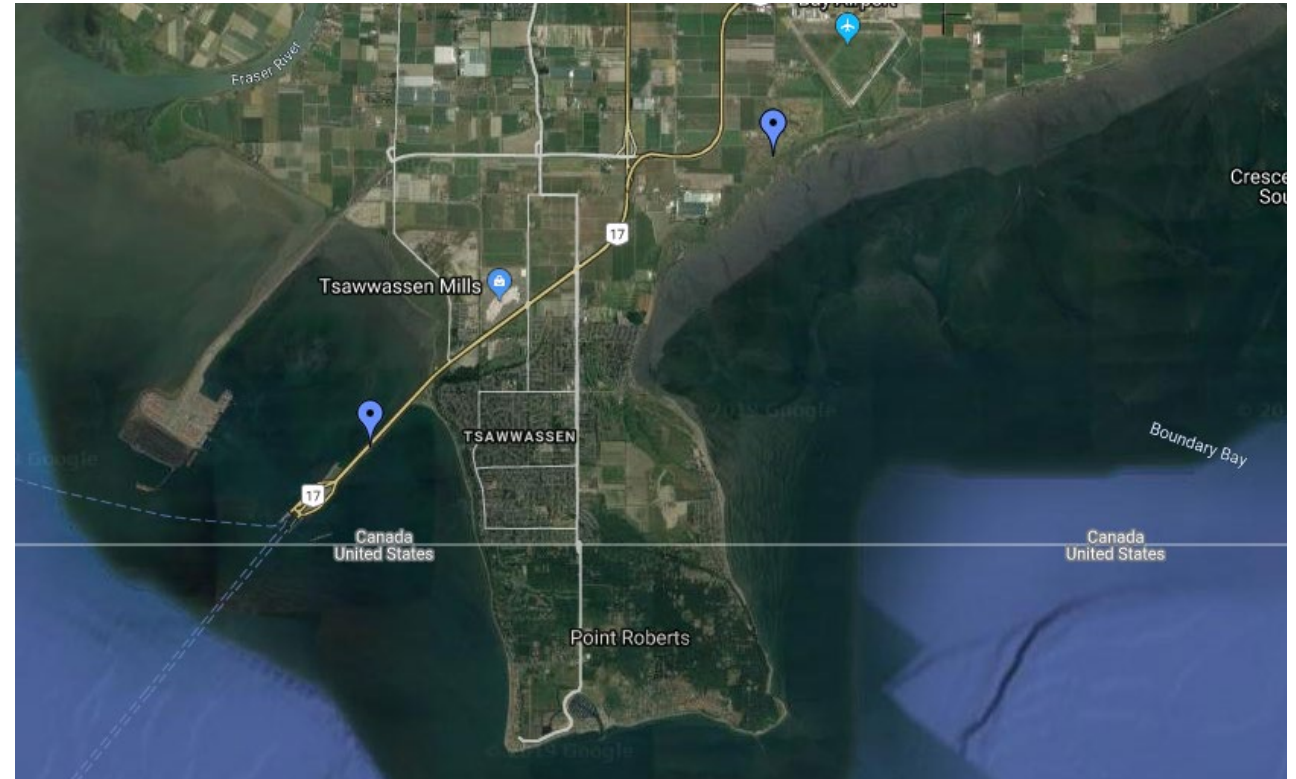
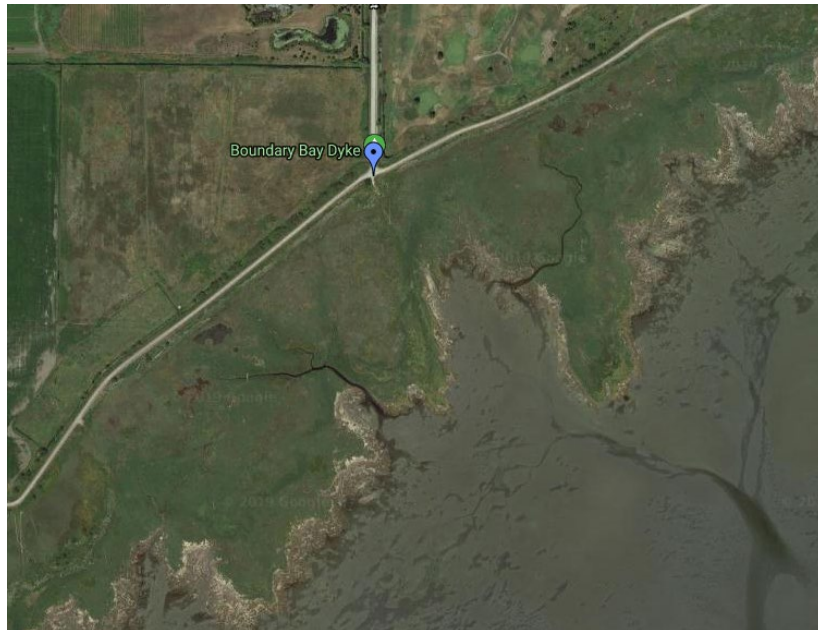


AMBLESIDE WATERFRONT CONCEPT PLAN



Boundary Bay WMA

Coastal shore wind sport access in wildlife management area



Oceanfront Parks and Open Space

Coastal shore wind sport access access being developed



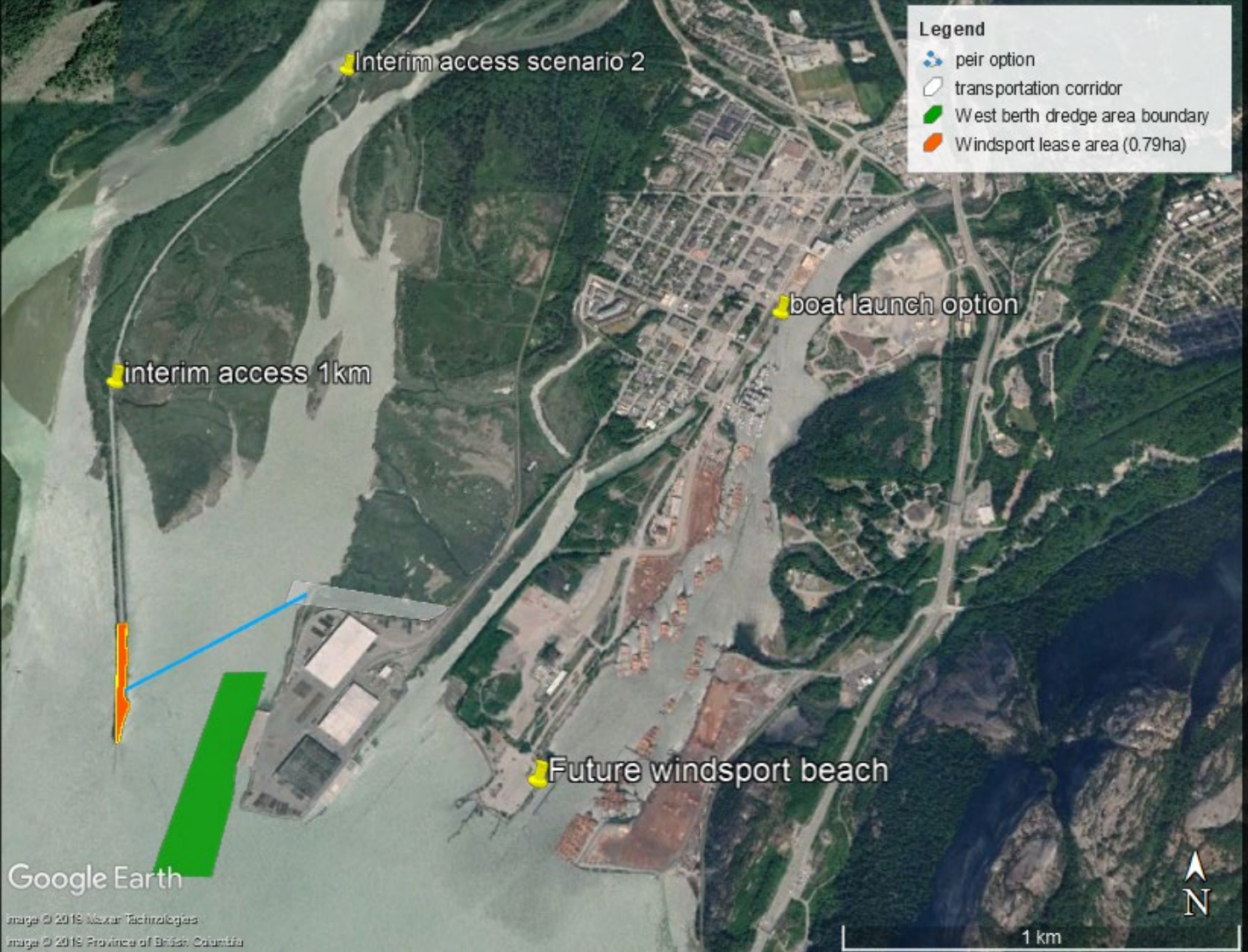
Proposed Uses & Facilities Diagram

- BEACH**
- 1 Oceanfront (Public) Beach
 - 2 Watersports Beach
- PARK ELEMENTS**
- 5 Park Entrance Dropoff and Pickup
 - 6 Public Waterfront Walkway
 - 7 Crushed Rock Paths
 - 8 Paved Path
 - 9 Board Walks
 - 10 Lands End Monument
 - 14 Public Washroom & Covered Openspace
 - 17 Kite/Wind Surfing Staging
 - 18 Flexible Open Space (lawn)
 - 19 Surface Stormwater Feature
 - 20 Children's Play Area
 - 22 Covered Outdoor Seating
 - 23 Smaller Items (Not Shown):
Bike Racks, Picnic Tables, Benches, Stockline, Utilities, Signage

- HABITAT**
- 3 Rocky Headlands
 - 11 Inter Habitat-Marsh
 - 12 Meadow/Dune Grass
 - 13 Native Shoreline Planting



Wind sport access options for further discussion



Phase 3 Bridge Pond Connection

